

INDUSTRY...AT A GLANCE

May 2026

DRILLING ACTIVITY IN PA

Pennsylvania: A World-Class Player in Shale Gas Production



#2

Largest Natural Gas
Producer in U.S.

~12,200

Producing Wells

7.7 Tcf

Produced in 2025

18%

Of Total U.S. Natural Gas
Production

36 of 67

Counties with
Producing Wells

Drilling Activity in PA

13,609 unconventional wells*

including 12,156 producing natural gas

3,927 unconventional well pads

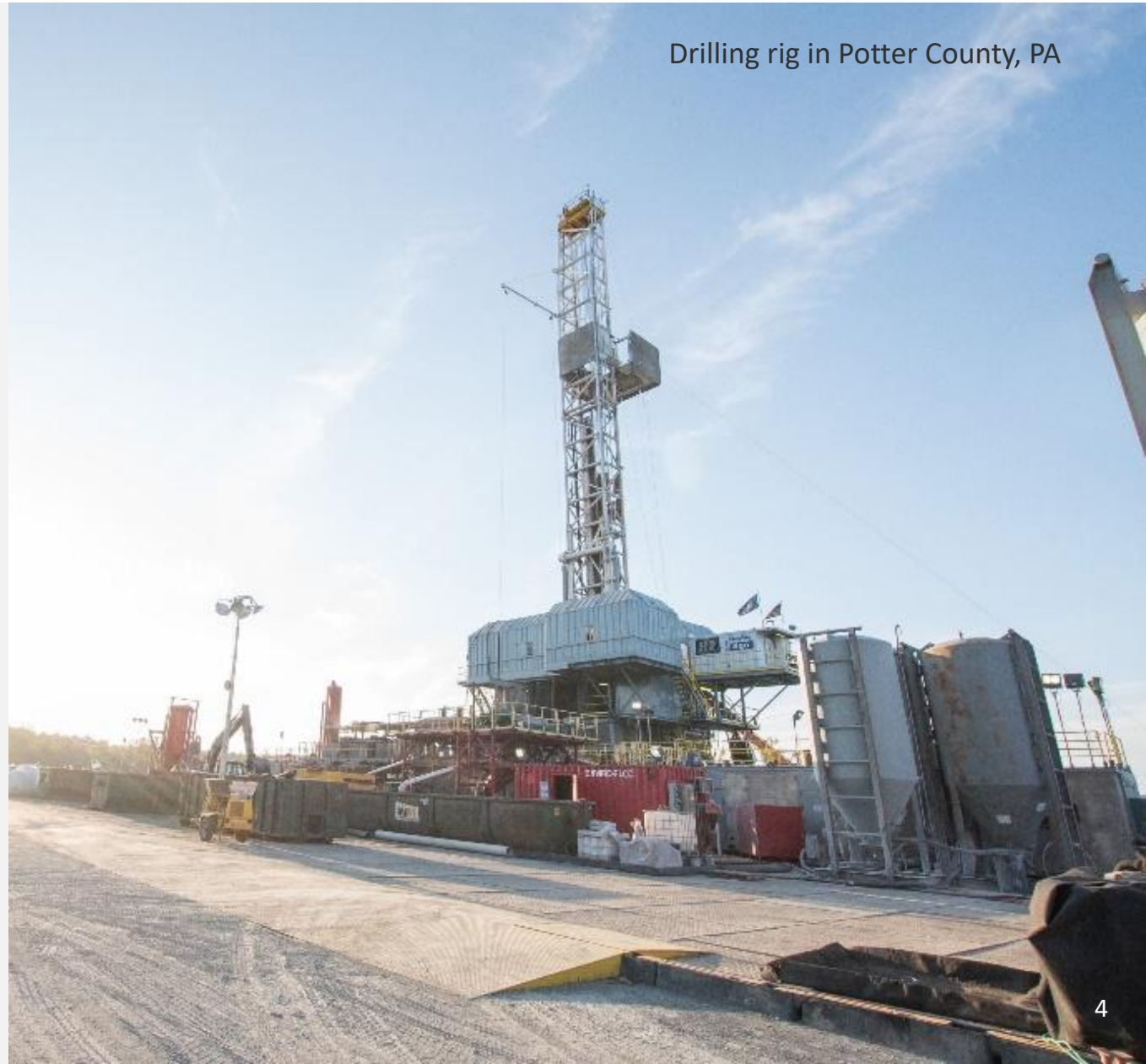
~21.4 Bcf per day

7.4+ trillion cubic feet per year

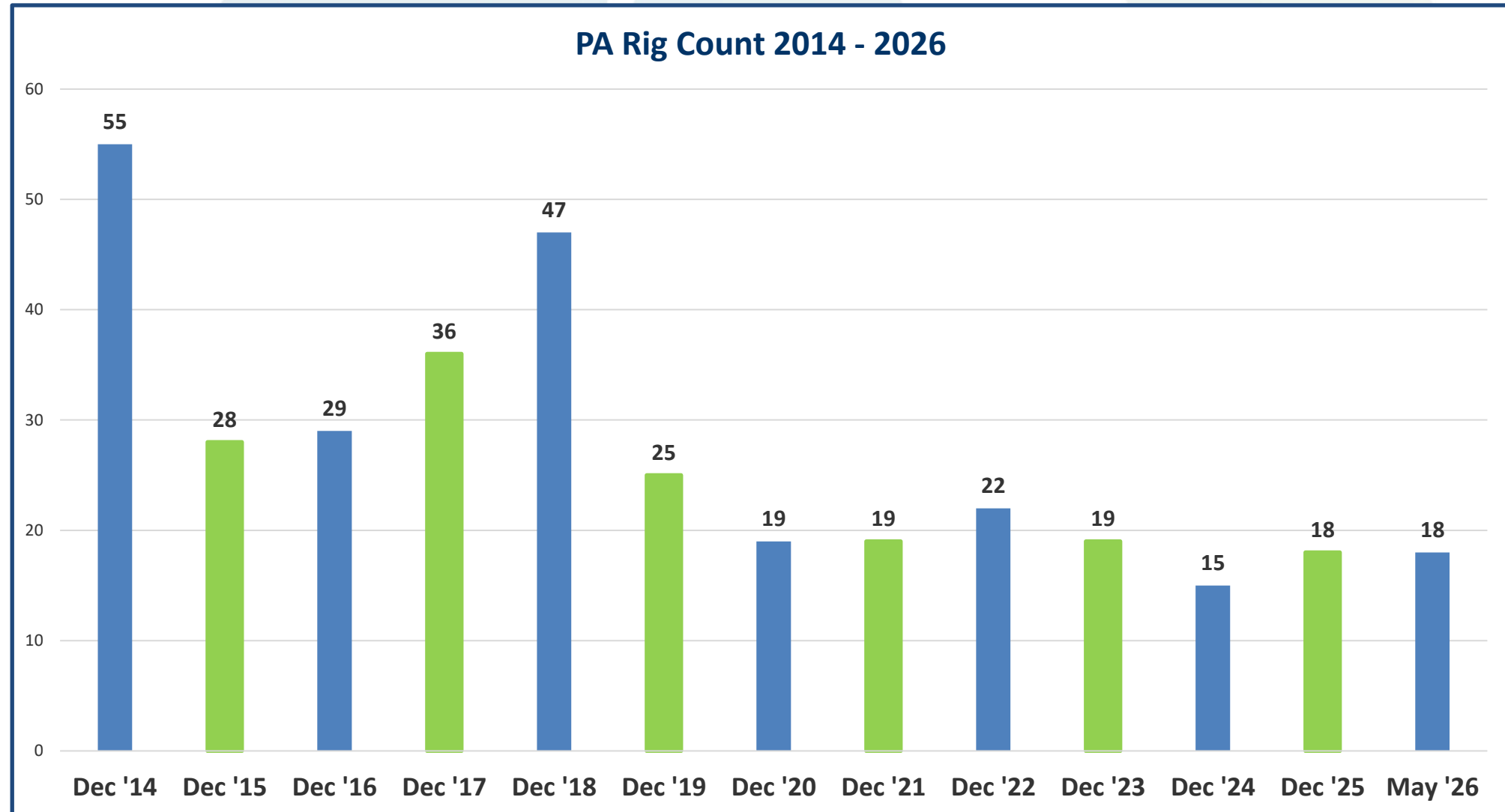
32% of total U.S. shale gas production

* February 2026 (most recent data available)

Drilling rig in Potter County, PA



Drilling Activity in PA



Drilling Activity in PA

Keep in Mind...

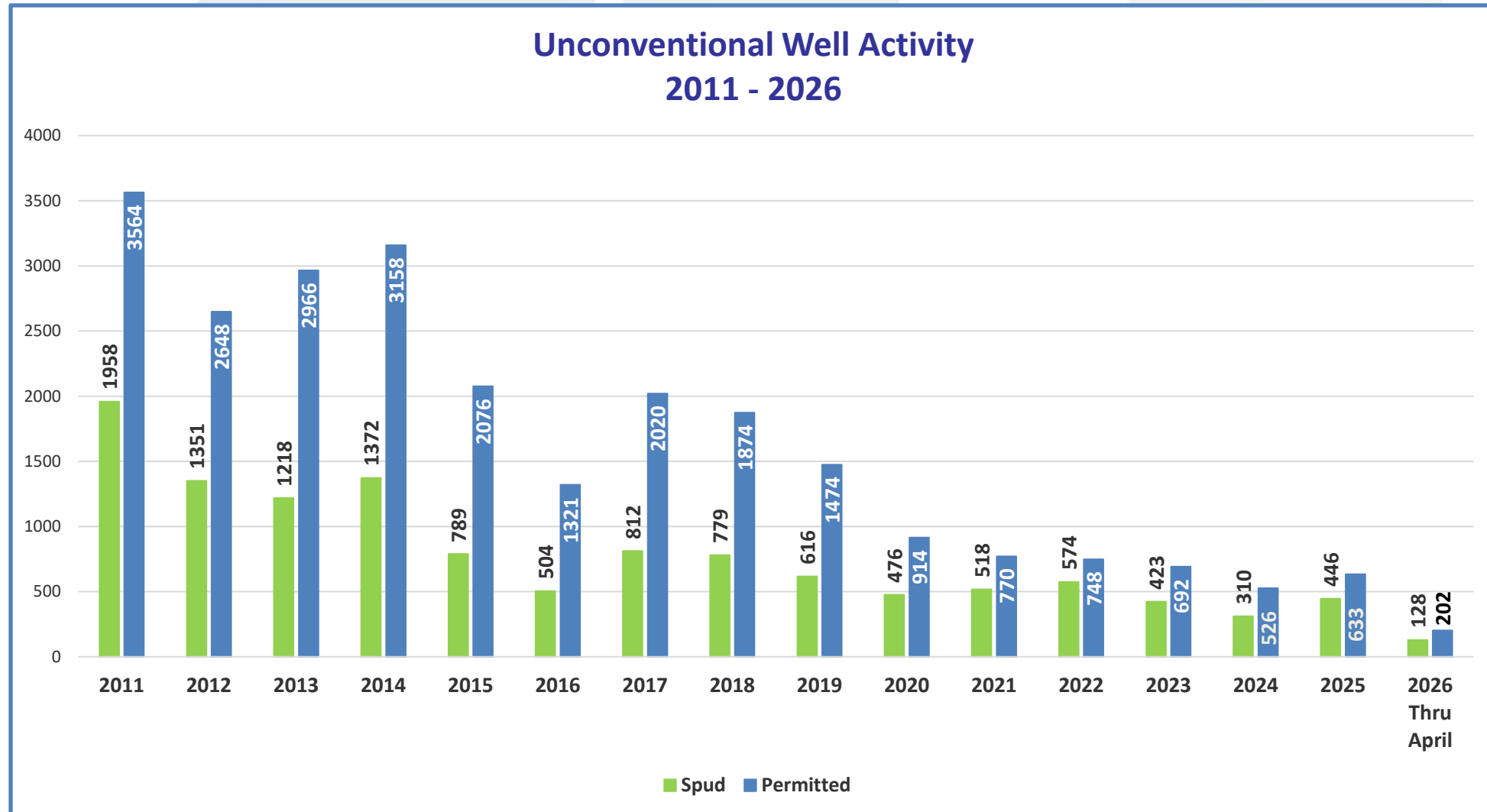
💧 Rig count not the same metric as 6-8 years ago:

- Longer laterals
- More efficient drilling
- More frac stage completions

💧 But still *an* indicator:

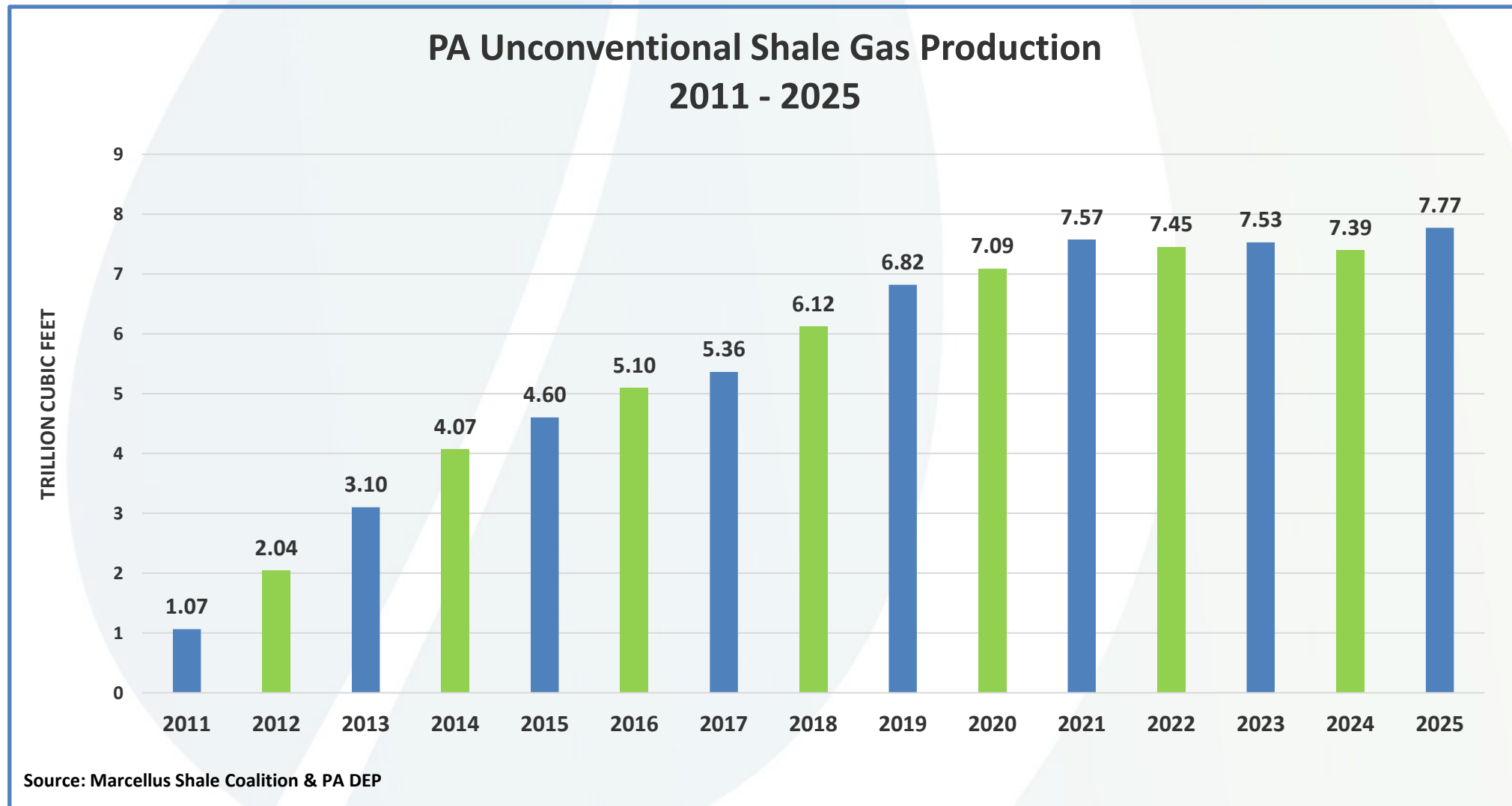
- Oil v Gas
- Wet v Dry
- Basin v Basin

Drilling Activity in PA



NATURAL GAS PRODUCTION

Fueling the Nation

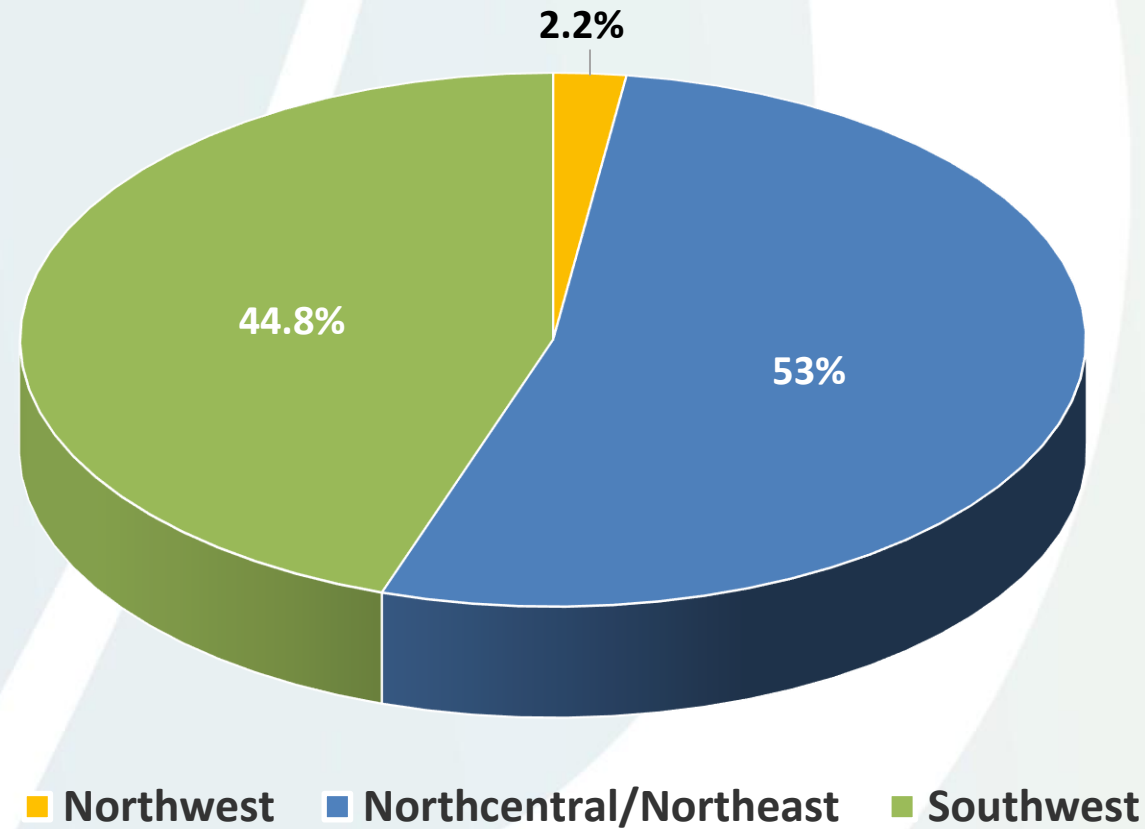


Top Ten Producing Counties by Volume (2025)

County	Production (MCF)	% of PA Production	# of Producing Wells
Susquehanna	1,373,443,742	17.7%	1,945
Bradford	1,173,085,439	15.1%	1,520
Washington	1,154,437,325	14.9%	1,981
Greene	1,140,925,300	14.7%	1,479
Lycoming	594,737,702	7.7%	1,018
Tioga	491,547,854	6.3%	868
Westmoreland	403,505,399	5.2%	369
Butler	257,178,573	3.3%	633
Wyoming	214,320,048	2.8%	297
Armstrong	177,075,844	2.3%	332

By The Numbers

Unconventional Natural Gas Production By Region - 2025



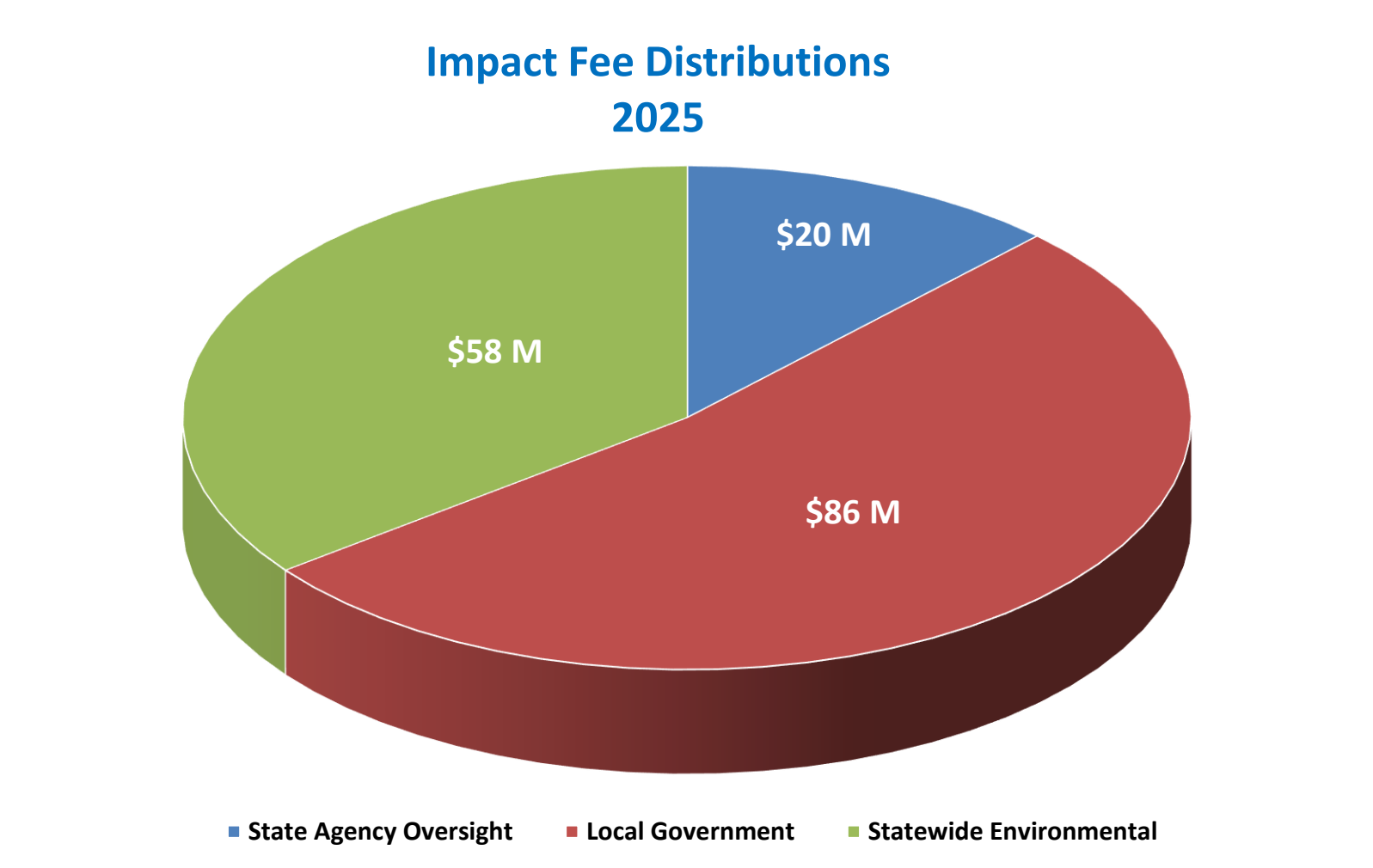
PA'S SEVERANCE TAX: THE IMPACT FEE

Impact Fee Revenues to Date



Year Distributed	Amount
2012	\$204.2 M
2013	\$202.5 M
2014	\$225.8 M
2015	\$223.5 M
2016	\$187.7 M
2017	\$173.3 M
2018	\$209.6 M
2019	\$251.8 M
2020	\$200.3 M
2021	\$146.3 M
2022	\$233.8 M
2023	\$278.8 M
2024	\$179.6 M
2025	\$164.6 M
2026	\$240 M
TOTAL:	\$3.12 Billion

Benefiting PA Communities



PA'S NATURAL GAS IMPACT FEE (TAX)

NEARLY \$3 BILLION GENERATED SINCE 2012

\$1.8B

Supporting Community
Initiatives

\$1.2B

Supporting Statewide
Projects

Benefitting Communities

NATURAL GAS TAX REVENUES NEAR \$3 MILLION FOR PA

\$165 MILLION DISTRIBUTED IN 2025

\$86M

LOCAL
GOVERNMENTS

\$58M

STATEWIDE
ENVIRONMENTAL
PROGRAMS

\$20M

STATE AGENCY
OVERSIGHT

ENERGY AFFORDABILITY

Lower Prices = Customer Savings 2008 vs 2025



Natural Gas Utility	PGC Rate / MCF		% Change
	2008*	2025*	2008-2025
PECO	\$13.16	\$6.64	-50%
NFG	\$10.86	\$4.77	-56%
PGW	\$13.02	\$5.49	-58%
Columbia	\$15.94	\$7.01	-56%
UGI	\$13.26	\$6.61	-50%
Peoples/Equitable	\$15.89	\$4.09	-74%

* PUC Purchased Gas Cost (PGC) Rate in Effect Prior to Annual Review

Natural Gas-Driven Consumer Savings



PA consumers realized **\$8.83 Billion** in savings last year compared to 2008 prices

Columbia



Residential: **\$616**



Commercial: **\$2,661**



Industrial: **\$33,541**

NFG



Residential: **\$529**



Commercial: **\$1,523**



Industrial: **\$9,275**

PGW



Residential: **\$459**



Commercial: **\$2,523**



Industrial: **\$7,530**

Peoples Gas



Residential: **\$920**



Commercial: **\$3,044**



Industrial: **\$37,170**

UGI



Residential: **\$479**



Commercial: **\$2,095**



Industrial: **\$8,299**

PECO



Residential: **\$443**



Commercial: **\$3,032**



Industrial: **\$20,375**

Benefiting Consumers



\$8,831,090,437

PA Natural Gas Consumer Savings in 2025 compared to 2008 prices

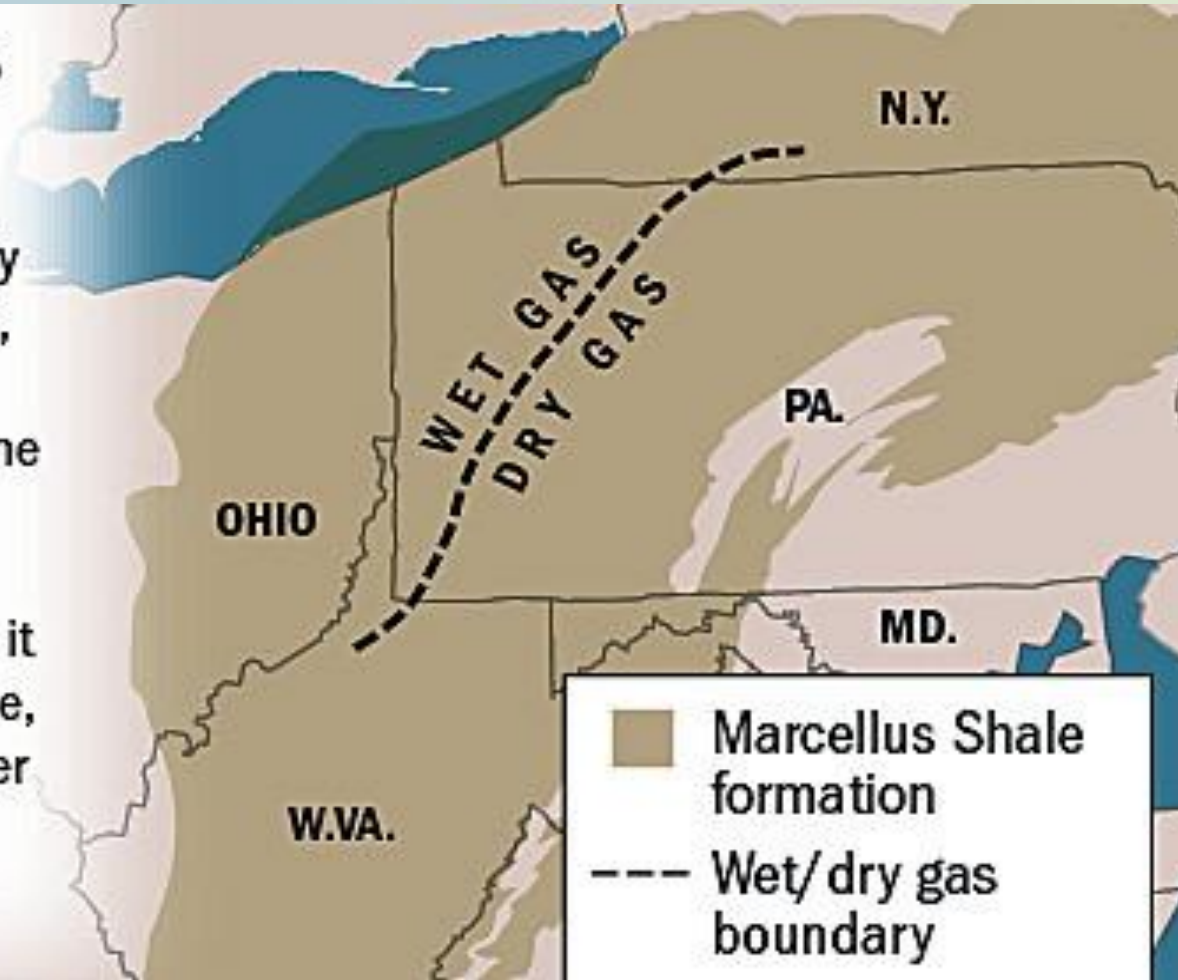
Based on average customer usage for each PA utility as reported in PA PUC Natural Gas Outlook 2024.
Savings adjusted to reflect inflation 2008-2024 (Bureau of Labor Statistics)

NATURAL GAS LIQUIDS

Shale Gas in PA

Wet/dry gas boundary

Natural gas is primarily composed of methane, and can also include ethane, propane, butane and pentane ("wet" gas). Natural gas is considered "dry" when it is almost pure methane, minus most of the other commonly associated hydrocarbons.

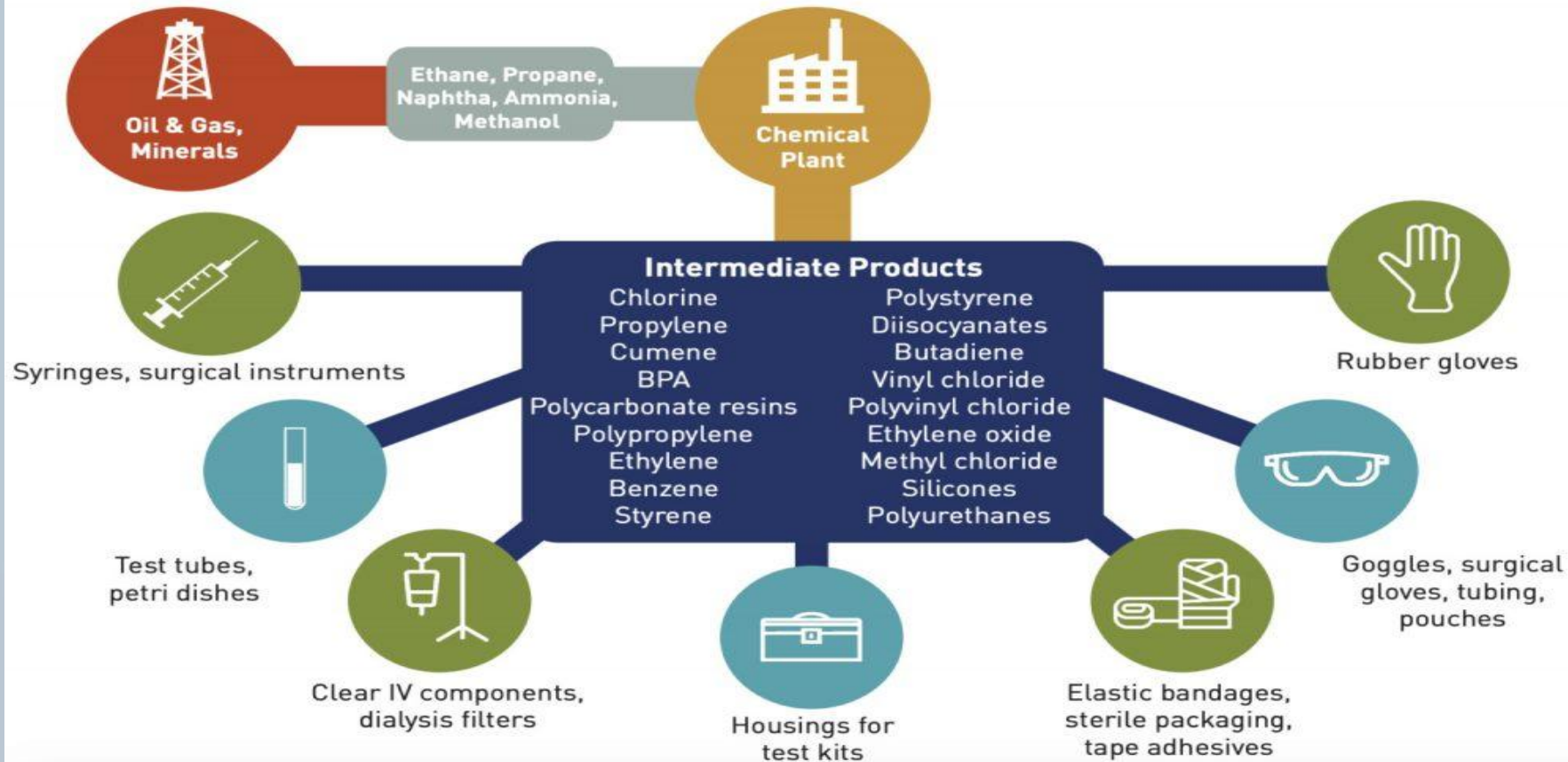


Source: Penn State University Extension

Natural Gas Liquids: Feedstock of Our Economy

MEDICAL SUPPLIES

Chemistry contributes 25% of the value of material inputs used to make medical supplies.



Fueling Manufacturing

💧 \$208 Billion Chemical Industry Investment Tied to Shale Gas

- \$109 Billion (completed projects)
- \$31 Billion (under construction)
- \$68 Billion (planning phase)

💧 351 Total Projects

- 786,000 total jobs
- \$61.1 Billion payroll
- \$309.5 Billion economic output



“Thanks to this versatile resource, American chemistry has experienced more than a decade of growth. Our new investment boosts employment, payrolls, and tax revenue in local communities and nationwide.”

Chris Jahn, President & CEO, ACC

Source: American Chemistry Council. Economic contributions tied to higher chemical industry output 2010 – 2030.

ECONOMIC IMPACTS

Economic Impacts

In 2022, PA's natural gas industry:

123,000

Pennsylvania jobs supported

\$41B+

in economic activity generated

\$6.3B+

in royalties paid to PA landowners

\$97,000

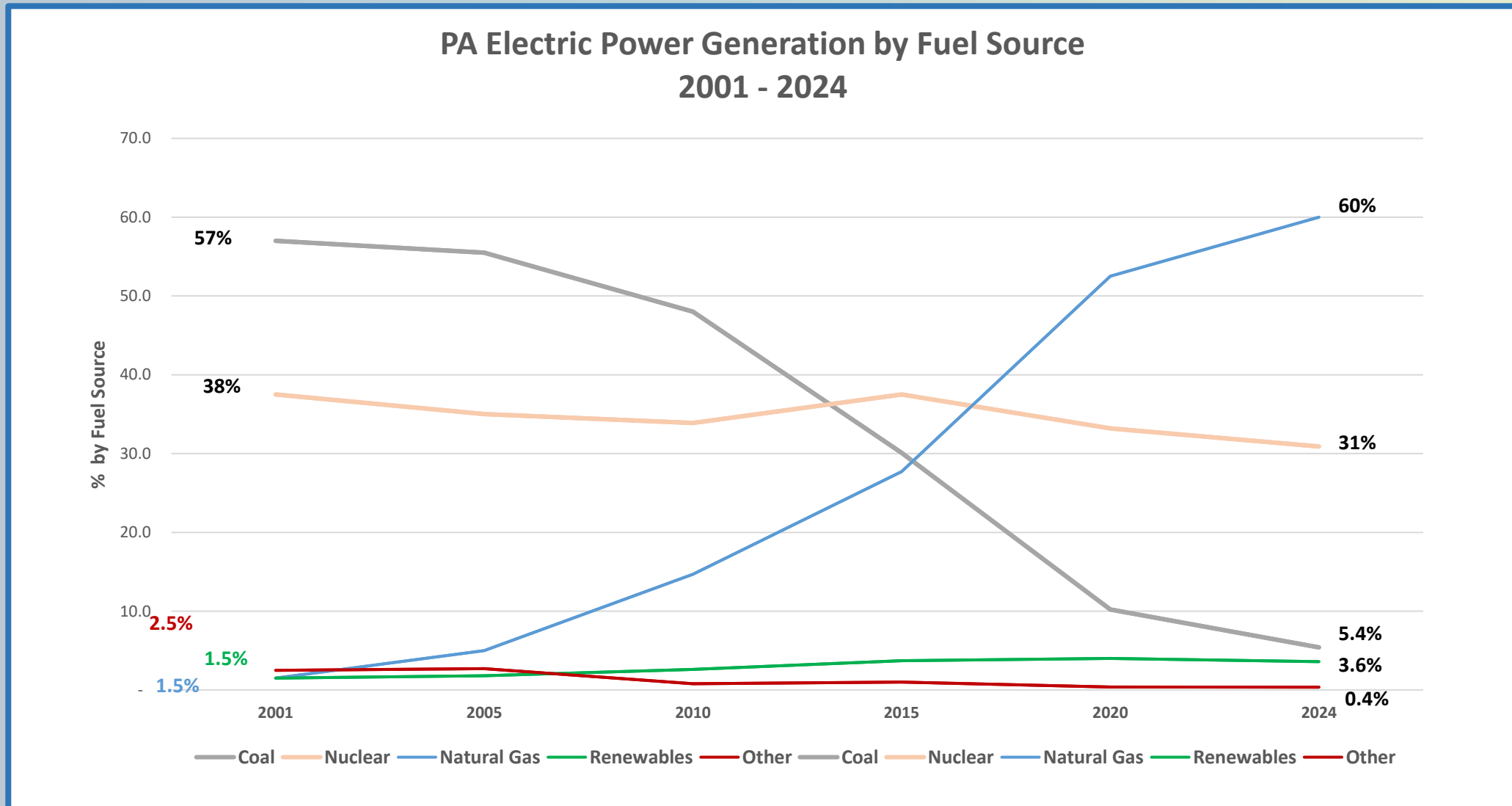
avg. worker salary (113% above PA median)

\$5.8B+ paid in local, state & federal taxes



ENHANCING AIR QUALITY

PA's Changing Energy Landscape



Enhancing Air Quality

Environmental Benefits are Undeniable — Since 2005

 **48%**
reduction in VOCs

 **93%**
reduction in NOx

 **98%**
reduction in SOx

 **46%**
reduction in CO₂

Enhancing the Environment...Now and in the Future

58M

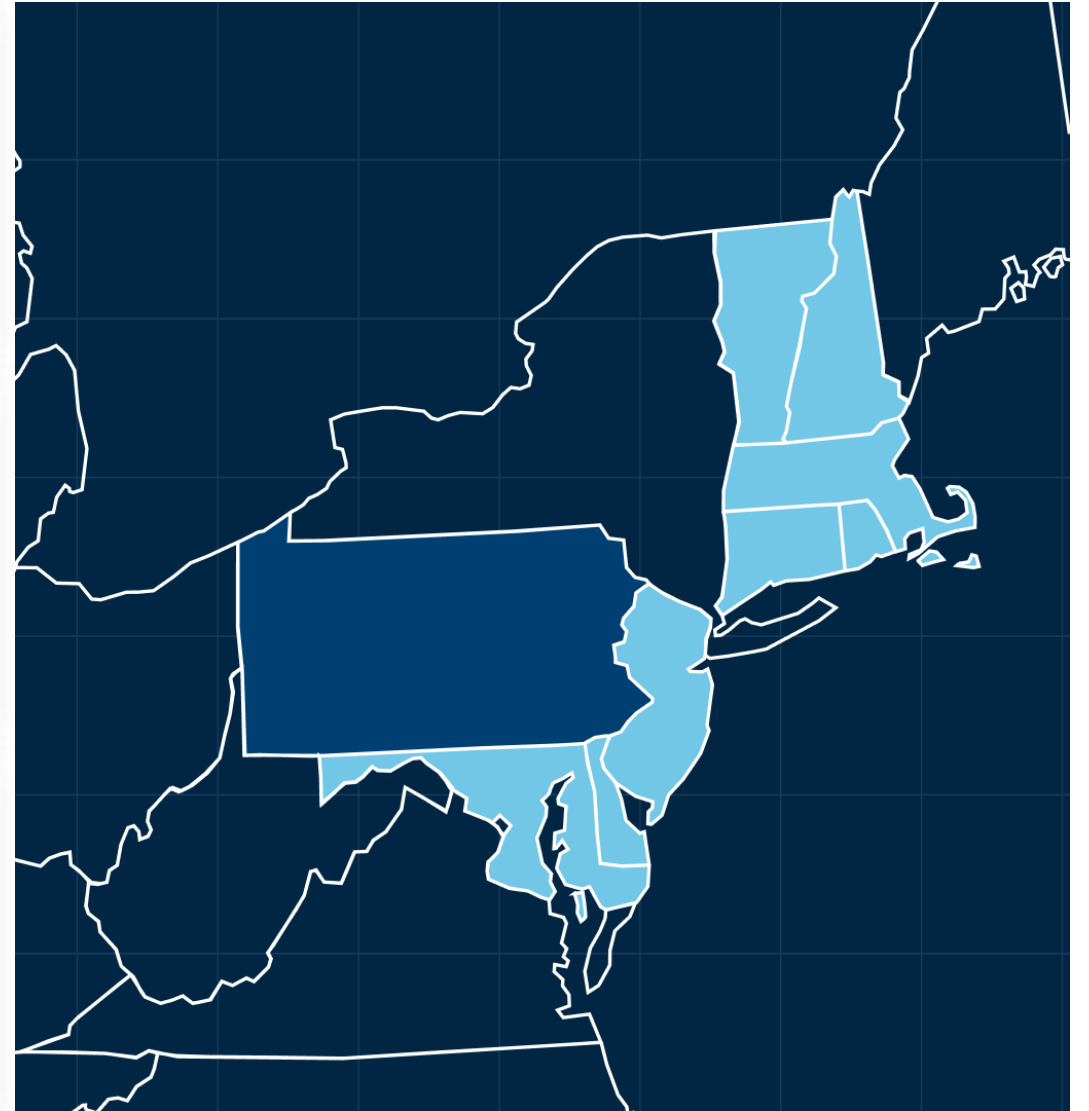
metric tons fewer CO₂ emitted in 2023
vs. 2005, thanks to natural gas electric
generation

12.5M

cars removed from the road for a year
— equivalent impact



Or removing every car in: PA, CT,
DE, MA, MD, NH, NJ, RI & VT —
combined



Marcellus Shale Coalition Contact

membership@marcelluscoalition.org

Support Pennsylvania Energy

www.unitedshaleadvocates.com